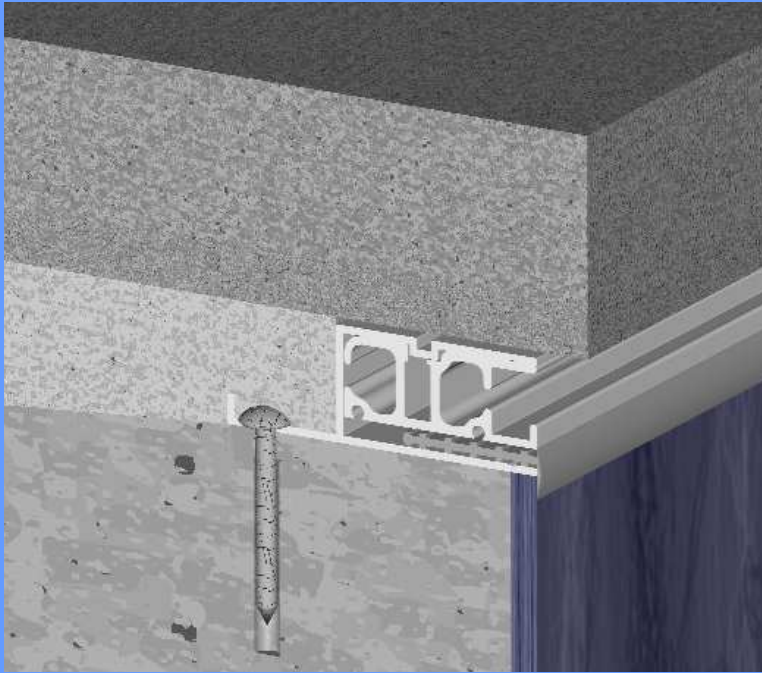


Guides: Encapsulated Guide

Guides are contained in a sleeve called "encapsulation" in the pool wall. Encapsulation is attached to the top of the pool wall after the tile has been put on, then the coping is placed on top of the encapsulation. This method does not depend on the coping for strength but instead on the encapsulation that is screwed and cemented into the pool wall. Coping overhang is typically 1/2 inch and the coping is usually 12 inches wide. Coping can be any thickness. Cantilever deck forms that clip into the encapsulation are also available for forming the edge of the concrete deck along the inside of the pool.



Coping Options

Though the coping options are limitless when using encapsulated guide, coping will need to be at least 2" thick when using Screw-on Guide or Walk-on Lid options. To use matching Walk-on Lid stones, choose coping that is at least 2" thick, at least 14" wide and 16" to 48" long

Coping: Natural and Pre-cast Coping Stone



Bluestone with Screw-on Guide



Bluestone with Encapsulated Guide



Limestone with Screw-on Guide



Travertine with Encapsulated Guide



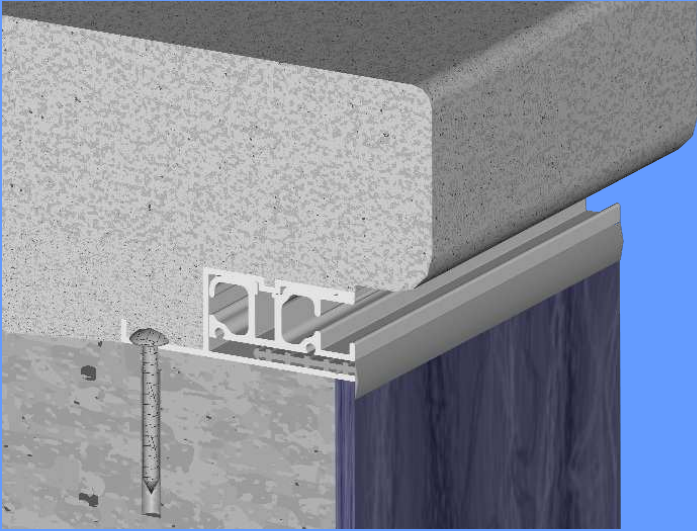
Pre-cast Stone with Screw-on Guide



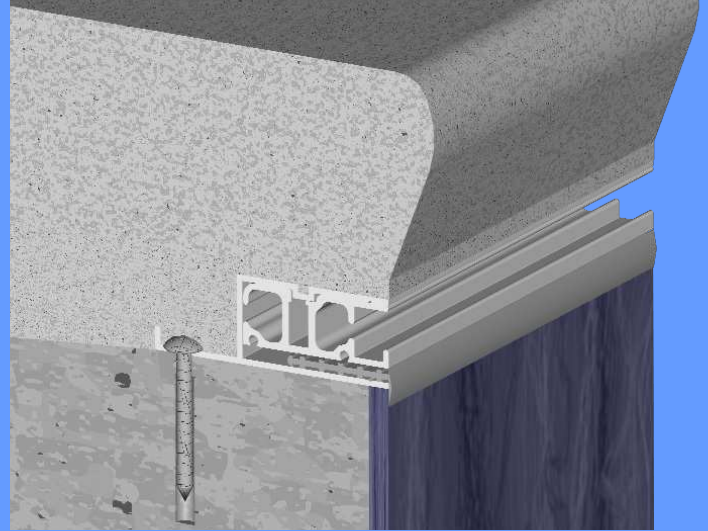
Brick with Encapsulated Guide

Coping: Formed Cantilevered Concrete

Cantilever and inclined concrete deck forming profiles are available for encapsulated guide pools.



Standard Cantilever Forming



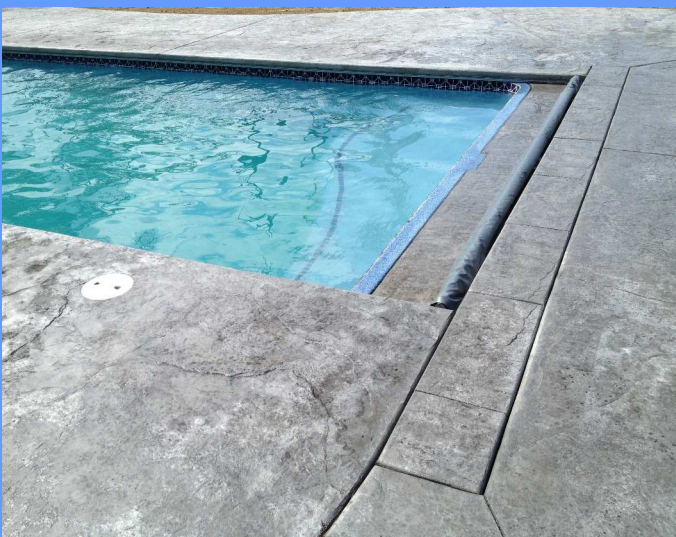
Inclined Forming



Exposed Aggregate Concrete



Brushed Concrete



Stamped Concrete



Stamped Concrete