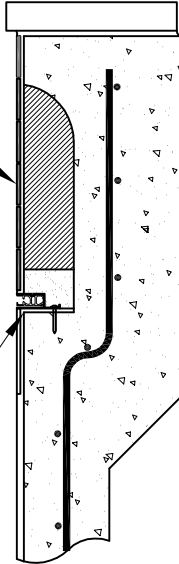


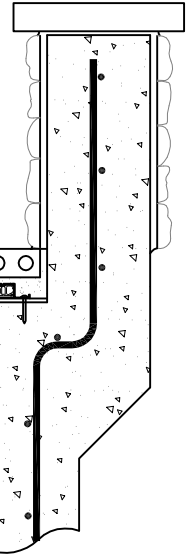
Raised Wall for Encapsulated Guide

3"x3"x16" slots every 18" along wall for installing encapsulation

3"x3" notch at same elevation as bond beams



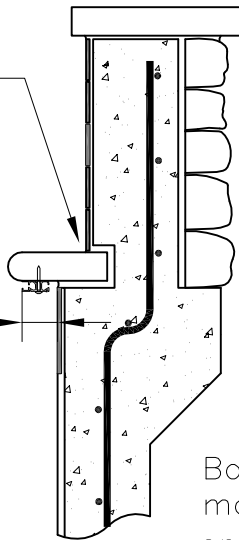
3" ledge at same elevation as bond beams



Raised Wall for Screw-on Guide

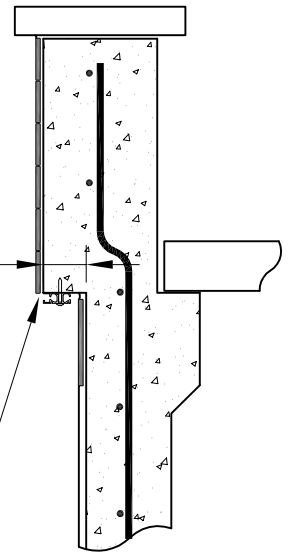
Notch wall to help support coping

2 1/2"



Bottom of cantilevered wall should match bottom of cantilevered deck or coping (Approximately 1/4" above bond beam for cantilever deck and 1/2" for coping)

3"



Note: Tile, veneer stone and ledges for concrete deck or thick veneer are not specific to examples shown.